

Prelude

From "The Fairy Queen"

Trumpet I in C

Henry Purcell

(1659 - 1695)

Edited by Jay Lichtmann

Allegro moderato ♩ = 92

f brillante

The first staff of music begins with a treble clef, a key signature of two flats (B-flat and E-flat), and a common time signature. The tempo is marked 'Allegro moderato' with a quarter note equal to 92 beats per minute. The dynamics are marked 'f brillante'. The notation consists of a series of eighth and sixteenth notes, with some rests and slurs.

4

The second staff of music continues the melodic line from the first staff, starting at measure 4. It features a sequence of eighth and sixteenth notes with slurs.

7

The third staff of music continues the melodic line, starting at measure 7. It includes a trill (tr.) over a note in the final measure of the staff.

10

The fourth staff of music continues the melodic line, starting at measure 10. It concludes with a final cadence, including a fermata over the final note.

Prelude

From "The Fairy Queen"

Trumpet 2 in C

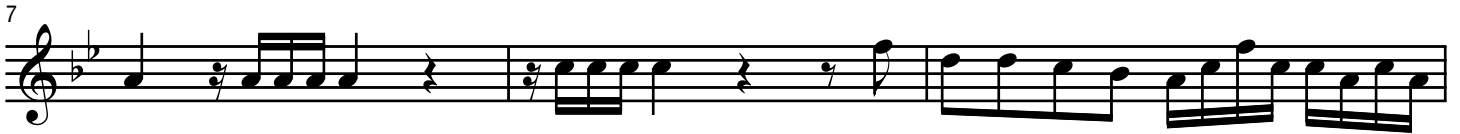
Henry Purcell

(1659 - 1695)

Edited by Jay Lichtmann

Allegro moderato ♩ = 92

f brillante



Prelude

From "The Fairy Queen"

Trombone I

Henry Purcell

(1659 - 1695)

Edited by Jay Lichtmann

Allegro moderato ♩ = 92



f brillante



Prelude

From "The Fairy Queen"

Trombone 2

Henry Purcell

(1659 - 1695)

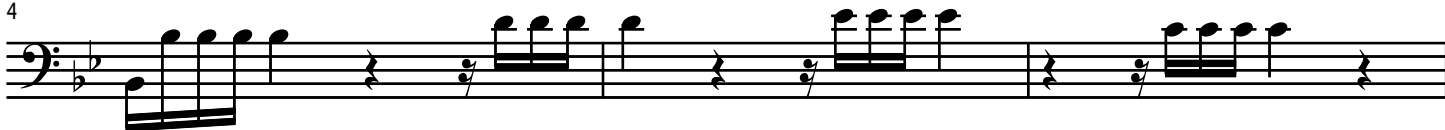
Edited by Jay Lichtmann

Allegro moderato ♩ = 92



f brillante

4



7



10



Prelude

From "The Fairy Queen"

Horn in F

(Substitute for Trombone 1)

Henry Purcell

(1659 - 1695)

Edited by Jay Lichtmann

Allegro moderato $\text{♩} = 92$

f brillante

The first staff of music is in treble clef with a key signature of one flat (Bb) and a common time signature (C). It begins with a treble clef, a flat sign, and a common time signature. The tempo marking 'Allegro moderato' and the metronome marking '♩ = 92' are positioned above the staff. The dynamic marking '*f brillante*' is placed below the staff. The notation consists of a series of eighth and sixteenth notes, with some rests and slurs.

4

The second staff of music continues the melody from the first staff, starting at measure 4. It features similar rhythmic patterns of eighth and sixteenth notes.

7

The third staff of music continues the melody from the second staff, starting at measure 7. It includes a change in the key signature to two flats (Bb and Eb) at measure 8.

10

The fourth staff of music continues the melody from the third staff, starting at measure 10. It concludes the piece with a final cadence.